
Meridian 1

Meridian 1 Attendant PC

LAN Interface Installation Guide

Document Number: P0874391

Document Release: Standard 1.00

Date: November 1997

© 1997

All rights reserved

Printed in the United States of America

Information is subject to change without notice. Northern Telecom reserves the right to make changes in design or components as progress in engineering and manufacturing may warrant. This equipment has been tested and found to comply with the limits for a Class A digital device pursuant to Part 15 of the FCC rules, and the radio interference regulations of Industry Canada. These limits are designed to provide reasonable protection against harmful interference when the equipment is operated in a commercial environment. This equipment generates, uses and can radiate radio frequency energy, and if not installed and used in accordance with the instruction manual, may cause harmful interference to radio communications. Operation of this equipment in a residential area is likely to cause harmful interference in which case the user will be required to correct the interference at their own expense.

SL-1 and Meridian 1 are trademarks of Northern Telecom. Windows 95/98 and Windows NT are trademarks of Microsoft

Installing the Meridian 1 Attendant PC LAN Interface Software

Overview

This guide provides you with instructions for installing the Meridian 1 Attendant PC LAN Interface software.

Requirements

Each workstation which will use the Meridian 1 PC LAN interface must already have the Meridian 1 Attendant PC software installed and have met these requirements as described in *Meridian 1 Attendant PC Installation Guide*:

— PC compatible system containing:

- Pentium processor, 166 MHz or higher
- 32 MB RAM available memory
- Hard disk with 2GB or larger hard drive; at least 10 MB of free disk space
- 17" SVGA color monitor (set for 1024 by 768 resolution, 256 colors)
- 16-bit sound board (recommended)
- Printer (optional)
- Ethernet card (configured for TCP/IP and addressed)
- Windows 95 or Windows NT operating systems
- RS232 serial port

Additionally, a workstation that will be part of the Meridian 1 Attendant PC LAN requires the following:

- One copy of the LAN Interface software.
- Connection to a Windows 95 or Windows NT compatible network.

Installing the LAN Interface Software

Note: Before you set up the Meridian 1 Attendant PC software turn off any virus protection programs you may have running. Virus protection programs can interfere with the set up process.

The disk set in your package includes an InstallShield Wizard to help you quickly install your copy of the Meridian 1 Attendant PC LAN Interface software.

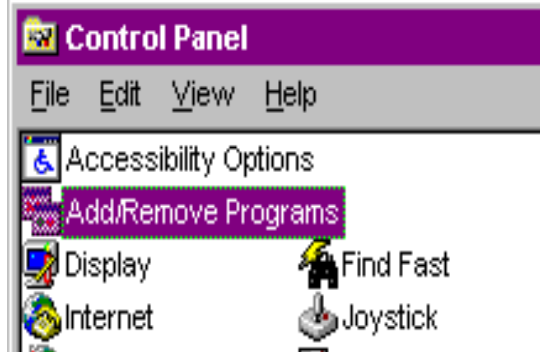
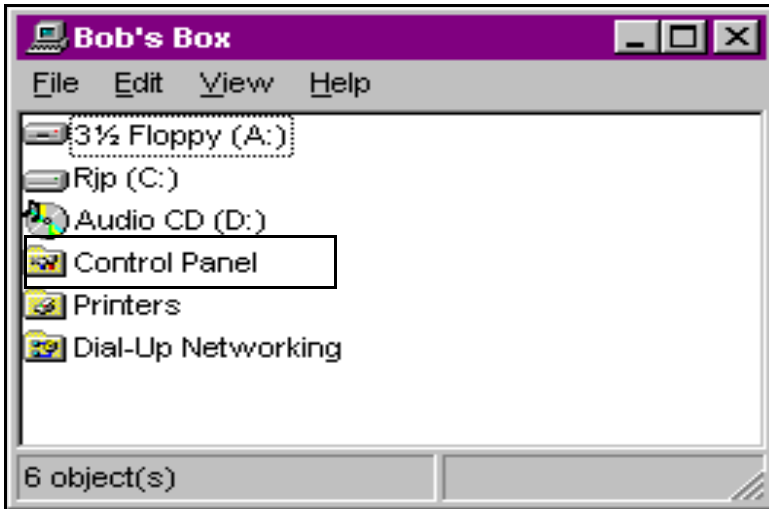
To install the LAN Interface software:

- 1 Make sure that no applications are running.
- 2 Make a written note of the serial number printed on the disks. This number will be requested later during the installation.
- 3 Insert disk 1 into the drive from which you want to install.
- 4 Double-click the **My Computer** icon on your Windows 95 desktop.



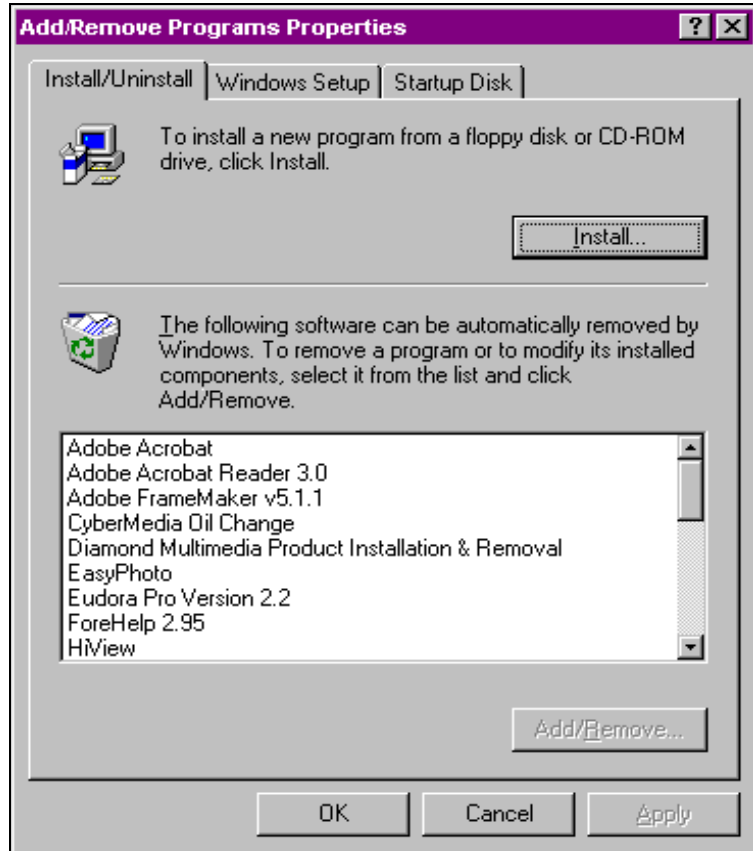
- 5 Double-click the **Control Panel** icon shown in Figure 1.
The "Control Panel" dialog window is displayed.
- 6 Double-click on **Add/Remove Programs** icon (Figure 1).

Figure 1
Accessing the Add/Remove Programs Control Panel



The "Add/Remove Programs" Properties sheet is displayed (Figure 2).

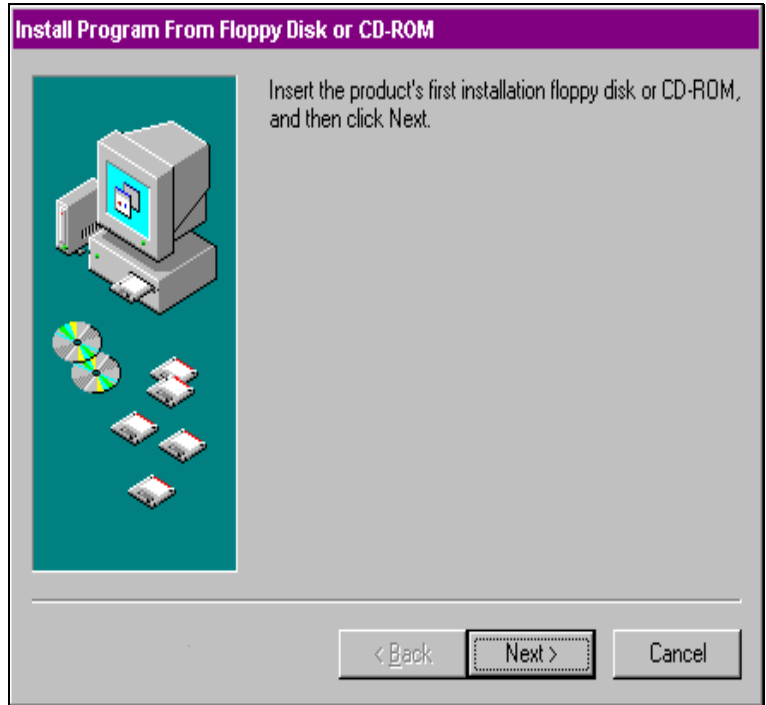
Figure 2
Install/Uninstall property sheet from Add/Remove Programs properties page



7 Click Install.

The Install Program from Floppy Disk" window is displayed (Figure 3).

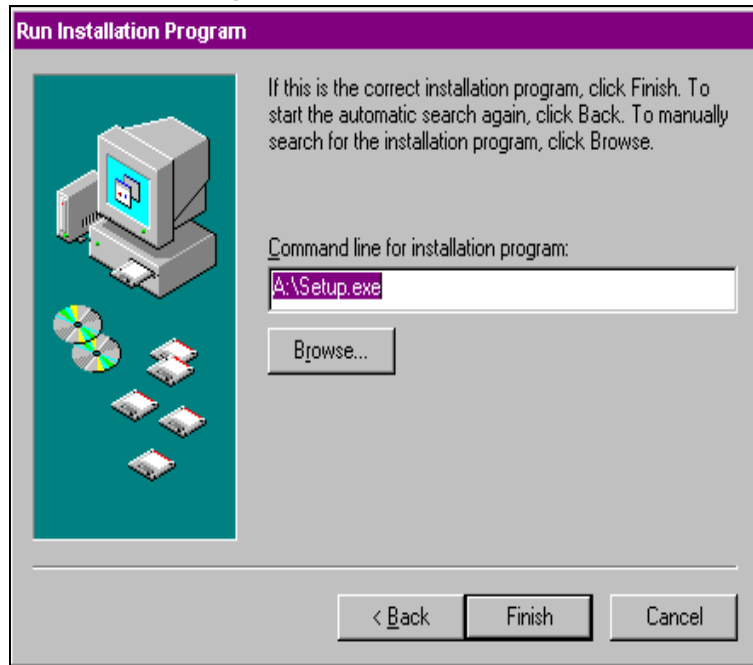
Figure 3
Install Program from Floppy Disk or CD-ROM window



8 Click **Next**.

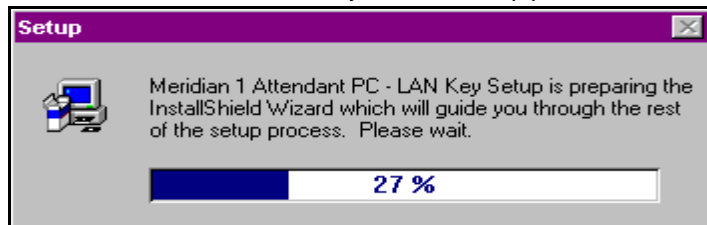
The Run Installation Program is displayed (Figure 4).

Figure 4
Run Installation Program window



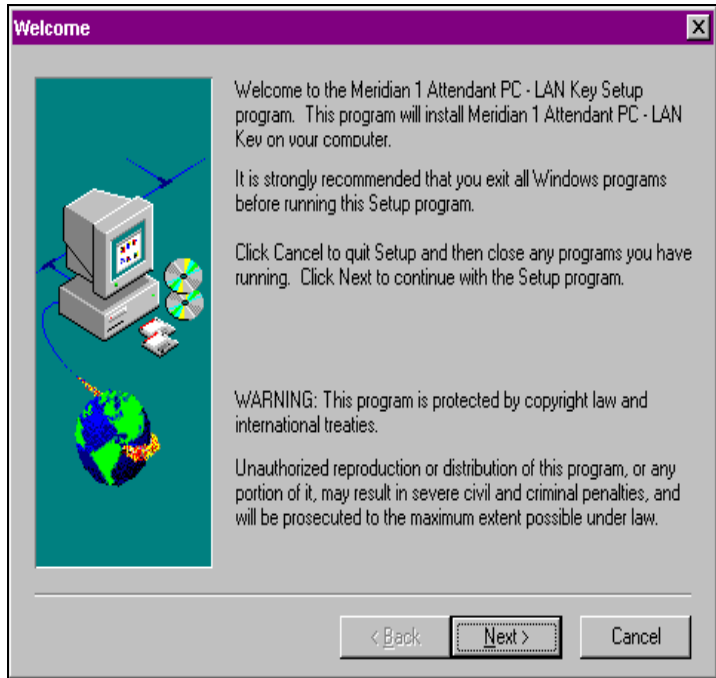
9 Click **Finish**.

The Meridian 1 Attendant PC LAN Interface setup prepares the "InstallShield Wizard" to assist you in the set up process.



The installation process continues with the Meridian 1 Attendant PC LAN Interface set up program or "Welcome" display (Figure 5).

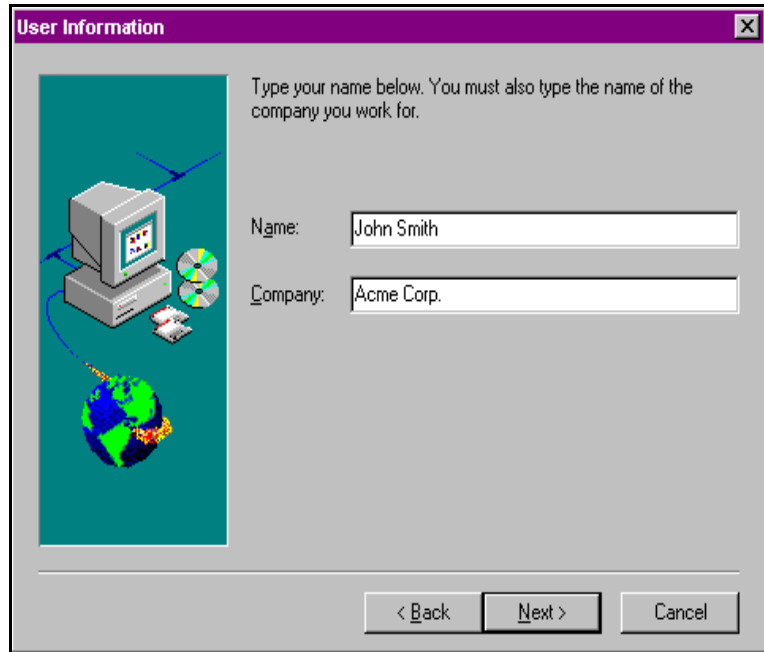
Figure 5
Welcome window



10 Click Next to display the User Information window (Figure 6).

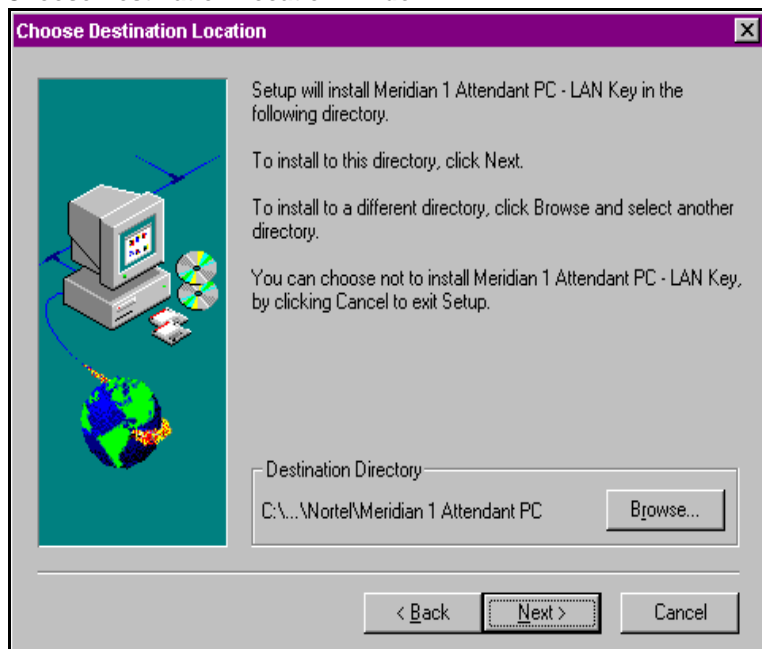
11 Supply the appropriate information and click **Next**.

Figure 6
User Information window



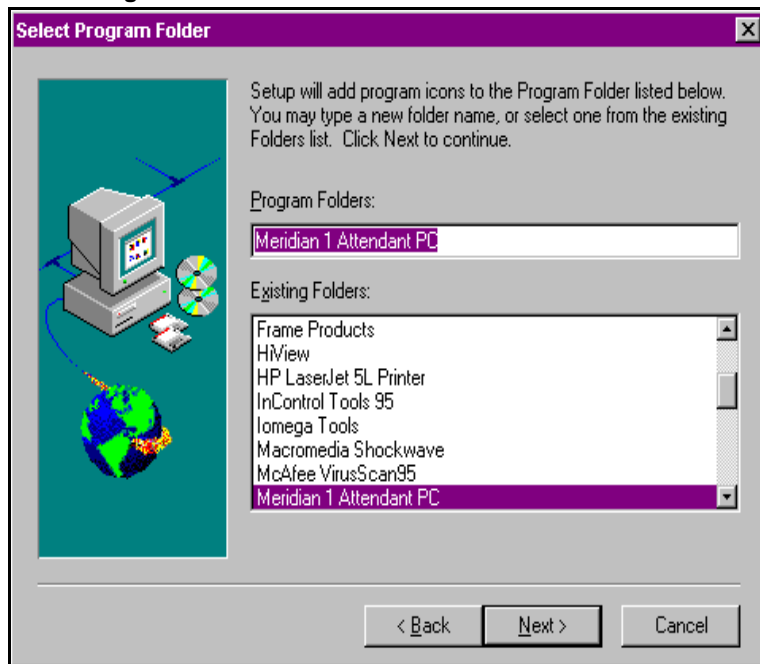
- 12 Click **Next** to choose the **Destination Folder** for the Meridian 1 Attendant PC, or browse to select another folder (Figure 7).

Figure 7
Choose Destination Location window



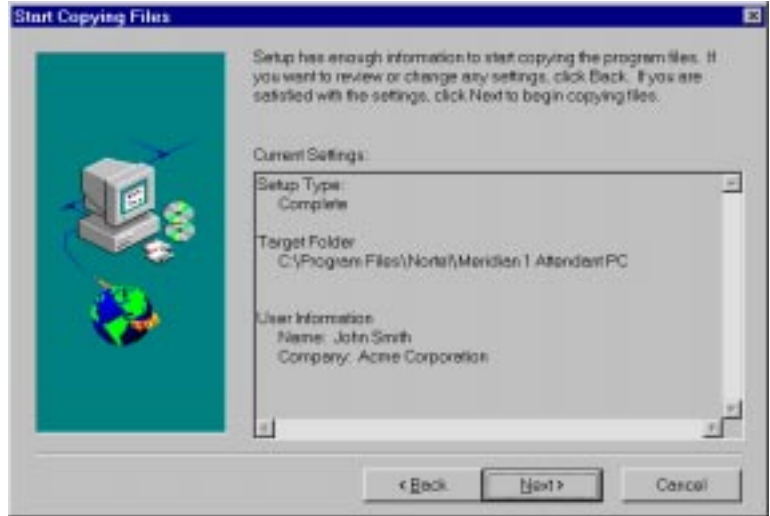
13 Click **Next** to add icon programs to a Program Folder or type a new program folder. (Figure 8).

Figure 8
Select Program Folder window



14 Click **Next** to accept the current settings. Click **Back** to change a setting (Figure 9).

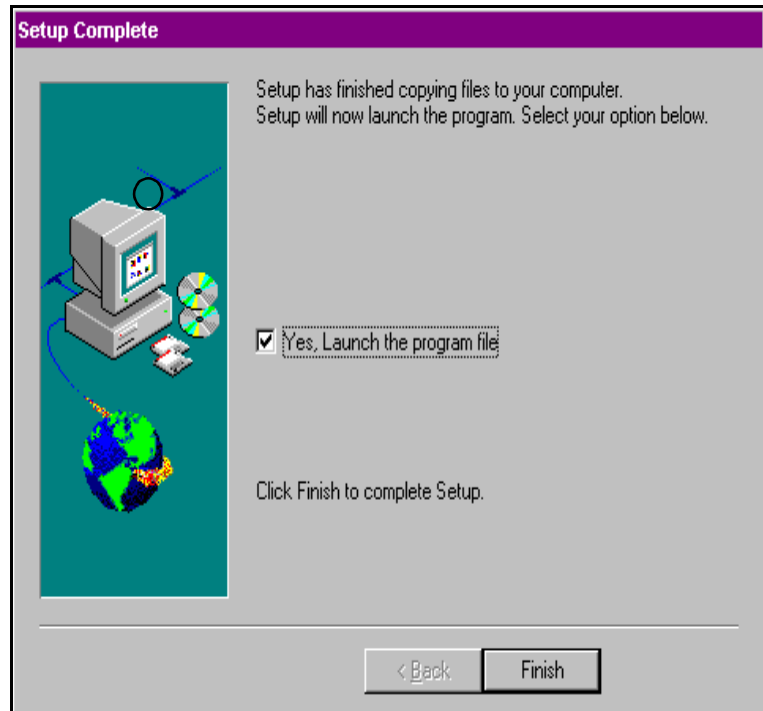
Figure 9
Start Copying Files window



A status gauge reports the final copying progress of the Meridian 1 Attendant PC LAN Interface set up program.

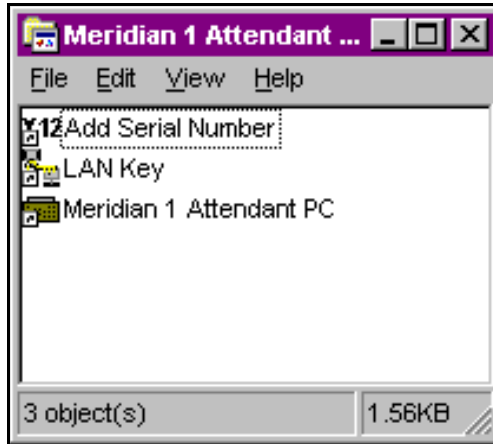
The **Setup Complete** window is displayed (Figure 10), indicating that the Meridian 1 Attendant PC LAN Interface software installation has been completed.

Figure 10
Setup complete display



15 Indicate a ✓ to launch the program icons (Figure 11).

Figure 11
Meridian 1 Attendant PC LAN Interface program icons

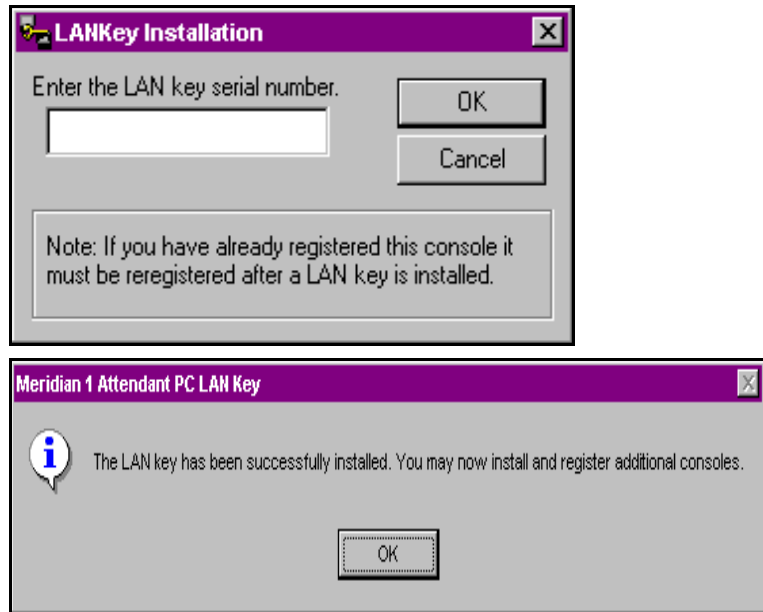


16 Click **Finish** to complete the Meridian 1 Attendant PC LAN Interface installation.

17 Enter the serial number found on the installation diskette, then click **OK** to confirm your serial number is correct.

Your Meridian 1 Attendant PC LAN Interface has been successfully installed (Figure 12).

Figure 12
Meridian 1 Attendant PCSerial number



Installation of the LAN Interface software allows the sharing of directory information among workstations. When a workstation makes an entry in the directory, all workstations will be updated, including any information screens.

Configuring Access Privileges

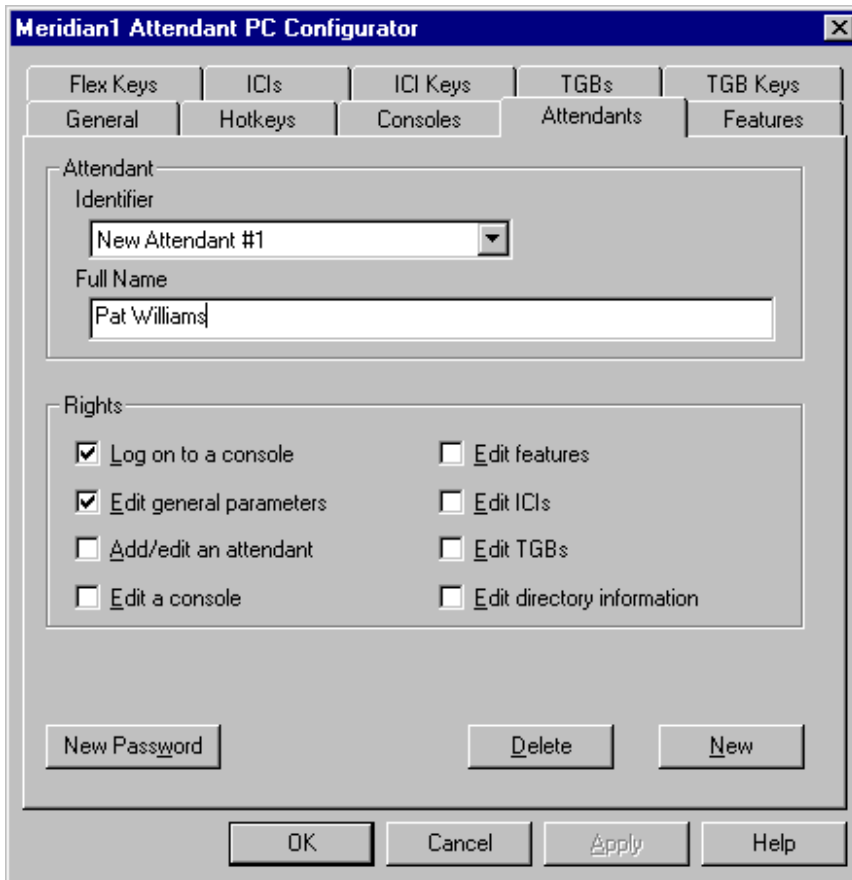
Access privileges, which determine whether a given workstation can perform certain actions, such as make changes to the directory, are located under the Configuration menu “Attendants” tab.

The “Rights” box lists privileges that are that can be configured for each attendant. A check in a box indicates that the attendant has the privilege to perform the specified function.

For example, the attendant with the “New Attendant #1” identifier has the privileges to “Log on to a Console” and “Edit general parameters.” However, the absence of check marks in other boxes indicates that no other privileges are available to this attendant. This means that “New Attendant #1” could not, for instance, “Add/edit an attendant” or “Edit Directory Information.”

Note: You must register at least one Meridian 1 Attendant PC and the LAN interface module before attempting to add additional workstations.

Figure 13
Attendant Rights



Meridian 1
Meridian 1 Attendant PC
LAN Interface Installation Guide

© 1997 Northern Telecom

All rights reserved

Information is subject to change without notice.

Northern Telecom reserves the right to make changes in design or components as progress in engineering and manufacturing may warrant. This equipment has been tested and found to comply with the limits for a Class A digital device pursuant to Part 15 of the FCC rules, and the radio interference regulations of Industry Canada. These limits are designed to provide reasonable protection against harmful interference when the equipment is operated in a commercial environment. This equipment generates, uses and can radiate radio frequency energy, and if not installed and used in accordance with the instruction manual, may cause harmful interference to radio communications. Operation of this equipment in a residential area is likely to cause harmful interference in which case the user will be required to correct the interference at their own expense.

SL-1 and Meridian 1 are trademarks of Northern Telecom. Windows95 is a trademark of Microsoft

Publication number: P0874391

Document release: Standard 1.00

Date: November 1997

Printed in the United States of America